

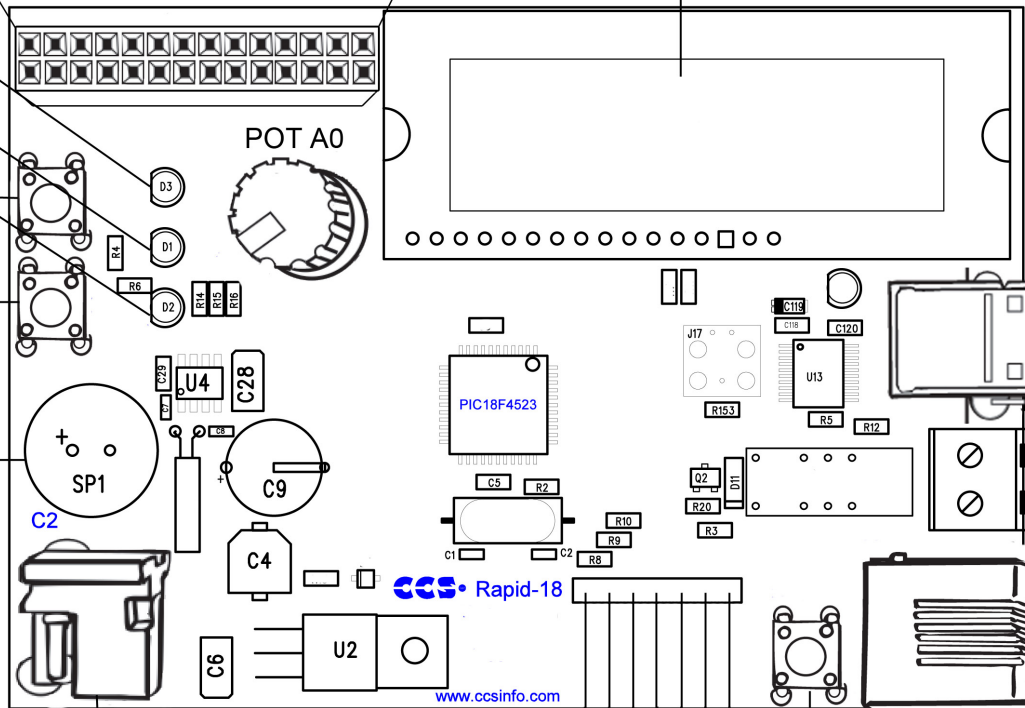
+5	A2	A4	E0	E2	C0	C2	C4	C6	B0	B2	B4	B6	G
+5	A1	A3	A5	E1	C1	C3	C5	C7	B1	B3	B5	B7	G

16X2 Character LCD

LED B3  
LED B4  
LED B5

Pushbutton B0  
Pushbutton B1

Piezo Buzzer



USB  
2 Pos Terminal Block

9 VDC

Keypad

Pushbutton Reset

ICD

CCS • Rapid-18  
www.ccsinfo.com